



**ALASKA DIVISION OF HOMELAND SECURITY &
EMERGENCY MANAGEMENT**



SITUATION REPORT 22-259 • SEPTEMBER 16, 2022

Toll-Free 1.800.478.2337

Anchorage Area 907.428.7000

SEOC 907.428.7100

<p><u>SEOC Preparedness Level</u> Level 2 – Heightened Awareness</p>	<p>http://ready.alaska.gov</p>	<p><u>National Terrorism Advisory System:</u> Read the NTAS Bulletin here</p>
<p><u>Maritime Security (MARSEC)</u> Level:1-Minimum Appropriate Security Measures</p>	<p>WHO Novel Coronavirus Pandemic (COVID-19): 2019 Novel Coronavirus</p>	<p><u>Alaska Military Installation Force Protection Level:</u> FPCON Bravo</p>

(Significant changes from previous situation reports are in red.)

Significant Issues:

Major Coastal Sea Storm:

The SEOC held community teleconferences yesterday with over 30 villages along the West Coast of Alaska. The National Weather Service-Alaska Region provided updated weather projections, revised storm surge and wind speeds expected for the approaching storm. Another community teleconference for the coastline villages along the Kotzebue Sound and Chukchi Coast will be held this afternoon.

The SEOC remains at Preparedness Level 2 in response to this forecasted event and will have additional staffing available over the weekend to respond to the storms. The SEOC, NWS, local and state government agencies, and private non-profit organizations are continuing to coordinate efforts to prepare for and respond to this storm.

Threat Level Changes:

None.

State of Alaska Department of Health (DOH)

The DOH is leading the State of Alaska COVID-19 Recovery, supported by the SEOC and other state departments as required.

For current COVID-19 information, see:

<https://covid19.alaska.gov/>

<https://www.cdc.gov/coronavirus/2019-ncov/index.html>

NTAS Bulletin

To read current or expired advisories, click the link below:

<https://www.dhs.gov/national-terrorism-advisory-system>

Travel Alerts and Conditions

For current driving conditions dial 511 or link to <https://511.alaska.gov/>

Barry Arm Landslide / Tsunami Risk

For the latest information on the Barry Arm Landslide and Tsunami risk, click here:

[DGGG Barry Arm Landslide and Tsunami Hazard](#)

Recent Earthquakes

USGS Earthquake Information: <http://earthquake.usgs.gov/>

National Tsunami Warning Center: <http://tsunami.gov/>

Alaska Volcanoes

Great Sitkin Alert Level: **Watch** and Aviation Color Code: **Orange**

Cleveland Alert Level: **Advisory** and Aviation Color Code: **Yellow**

Pavlof Alert Level: **Watch** and Aviation Color Code: **Orange**

Semisopchnoi Alert Level: **Watch** and Aviation Color Code: **Orange**

For Alaska Volcano updates, go to: <https://www.avo.alaska.edu/>

Air Quality Index (AQI) Advisories

For the most up to date Air Quality Index Advisories:

<http://dec.alaska.gov/Applications/Air/airtoolsweb/Home/Index>

Spills of Oil and Hazardous Substances

The ADEC Spill Prevention and Response page is located at:

<http://dec.alaska.gov/spar/ppr/spill-information/response/>

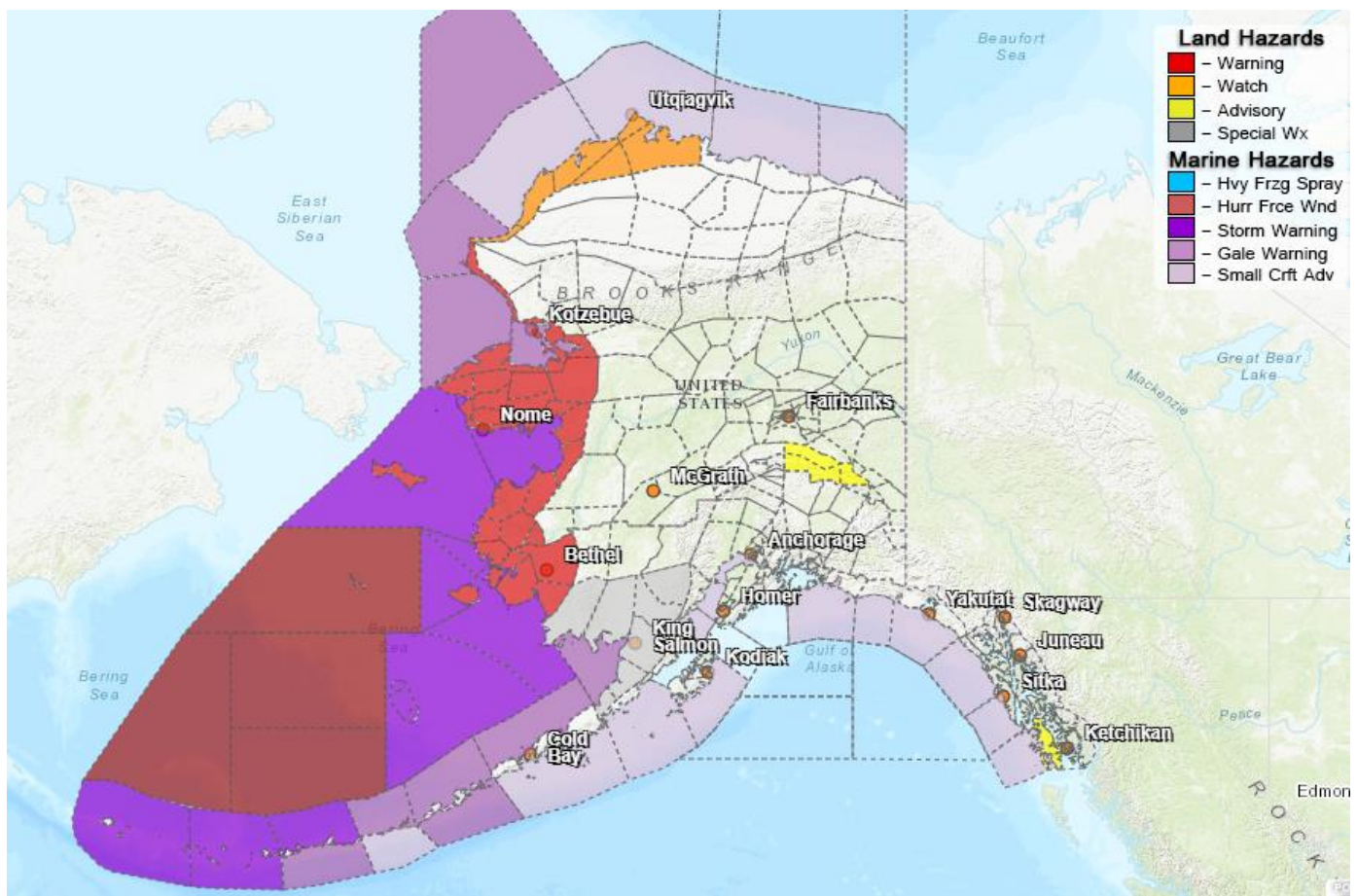
Alaska Cyber Security Information

State Employees may sign up for cyber security notifications and alerts at

<https://oit.alaska.gov/security>

CISA-Cybersecurity Services and Tools: www.cisa.gov/free-cybersecurity-services-and-tools

Significant Weather:



The following weather watches, warnings, or advisories have been issued:

- High Wind Warnings remain in effect for the western coastline from Quinhagak north to Point Lay as well as St. Lawrence and the Pribilof Islands until Saturday evening. Wind speeds of up to 90mph are possible in the region.
- Coastal Flood Warnings remain in effect for the western coastline from Quinhagak north to Point Lay as well as St. Lawrence and the Pribilof Islands. High water levels of 5 to 18 feet above the normal high tide line have been forecast for the region with the highest water levels expected on Saturday. Significant flooding is expected in many coastal communities within the region.
- A Coastal Flood Watch has been issued for the Northern and Western Arctic Sea Coast. Coastal flooding is possible in the region from Saturday into Sunday.
- A Wind Advisory has been issued for the Eastern Alaska Range. 30 to 40 mph winds with gusts to 50 mph are expected from 4:00 P.M. today until 4:00 P.M. Saturday.
- A Dense Fog Advisory is in effect until 9:00 A.M. today for Western Prince of Wales Island.
- A Special Weather Statement has been issued for Bristol Bay and the Nushagak Peninsula. High surf conditions are possible in the area with water levels 2 feet above the normal high tide line.

For more information and the most current weather, Watches / Warnings / Advisories go to:
<http://www.weather.gov/arh>.

The Next Situation Report: will be 19 September 2022. A significant change in the situation or the threat level will prompt an interim report. This report is posted on the internet at <https://ready.alaska.gov/sitrep>.

To register for email distribution, go to <http://list.state.ak.us/mailman/listinfo/dhsem.situation.report>. Direct questions regarding this report to the SEOC at 907-428-7100 or seoc@alaska.gov